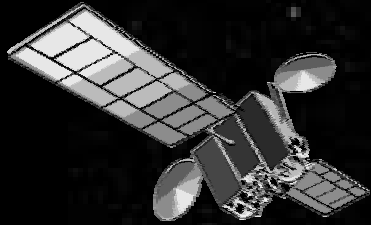


Asia-Pacific Environmental Innovation Strategy (APEIS)

Integrated Environmental Monitoring (IEM)



Scope of the Workshop on APEIS-IEM Network

Masataka WATANABE, National Institute for Environmental Studies, Japan

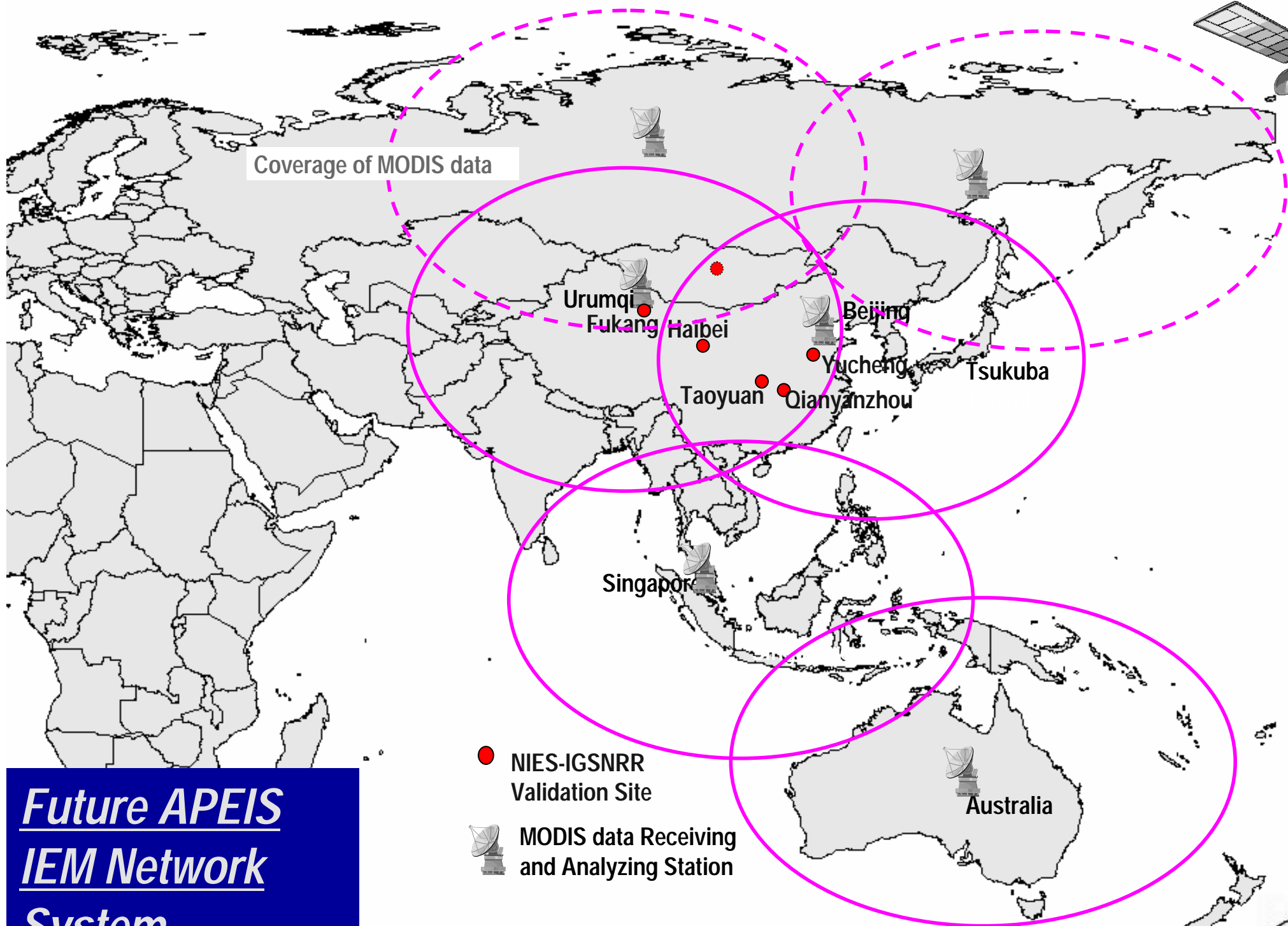
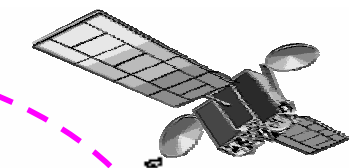
Objective of APEIS-IEM

- Establishment of environmental monitoring system using MODIS-Network
- Development of data analysis system for MODIS high-order products
- Establishment of APEIS-FLUX Network
- Development of the integrated model for assessment of ecosystem goods and services at catchment scale

Coverage of MODIS data

- NIES-IGSNRR Validation Site
- 📡 MODIS data Receiving and Analyzing Station

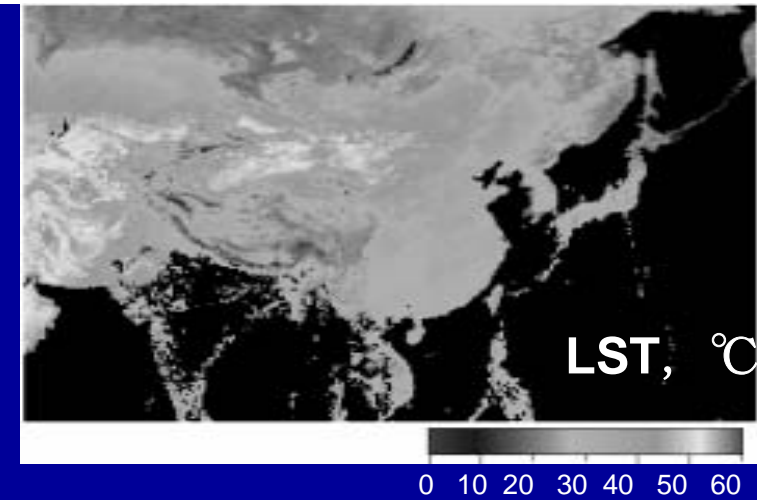
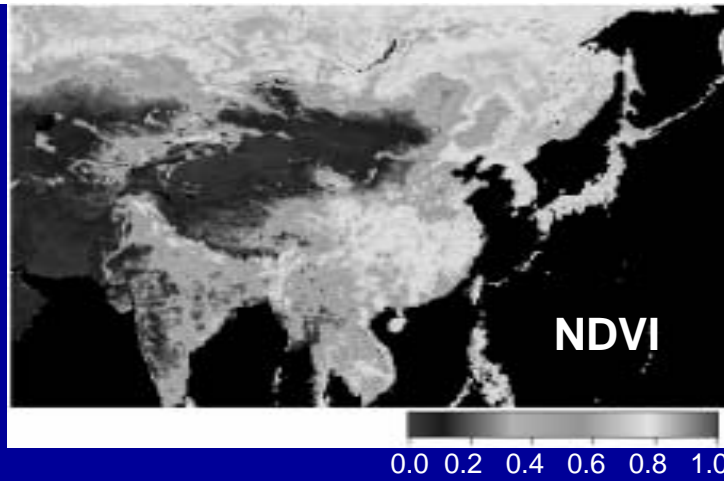
***Future APEIS
IEM Network
System***



MODIS Data Processing System



Level 0,1

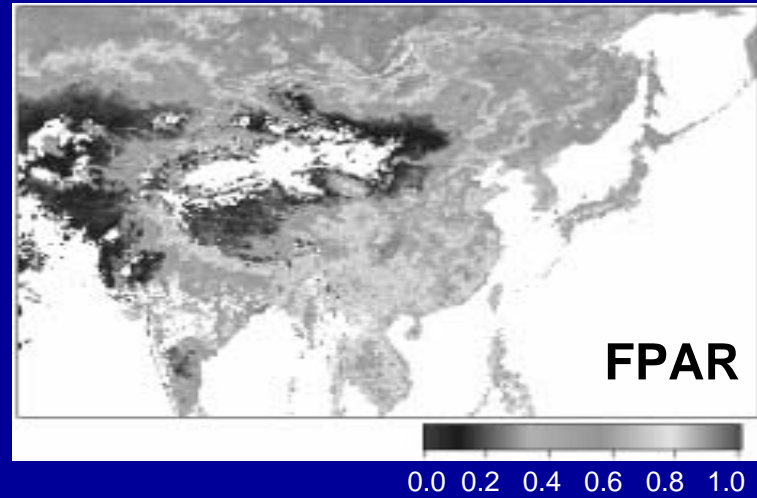


Level 2

Surface Reflectance
Thermal Anomalies
Land Cover/ Land Cover Change
Land Surface Temperature

Level 3

Vegetation Indices (NDVI & EVI)
Albedo16-day L3
Vegetation Cover Conversion

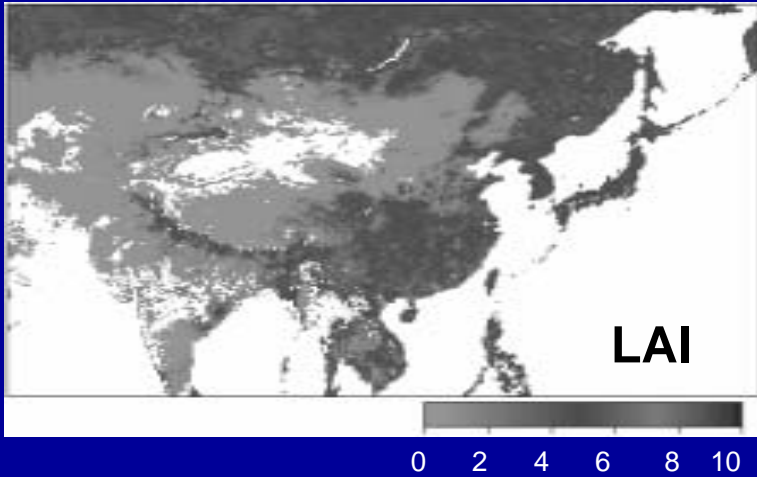


Level 4

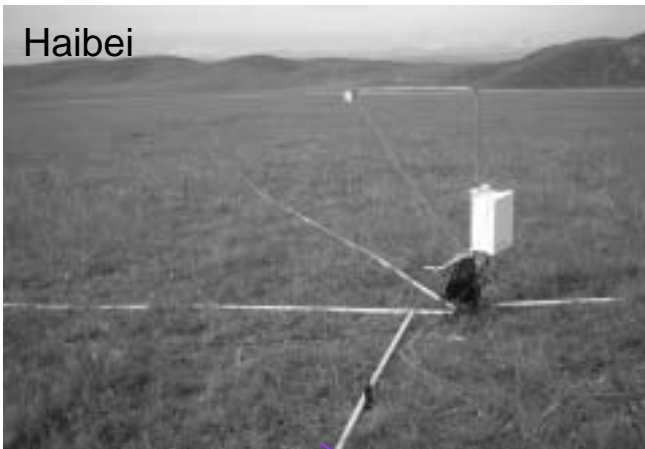
Leaf Area Index & FPAR
Photosynthesis and NPP

Level 5

Integrated Models for Condition and Trends of Ecosystem Services



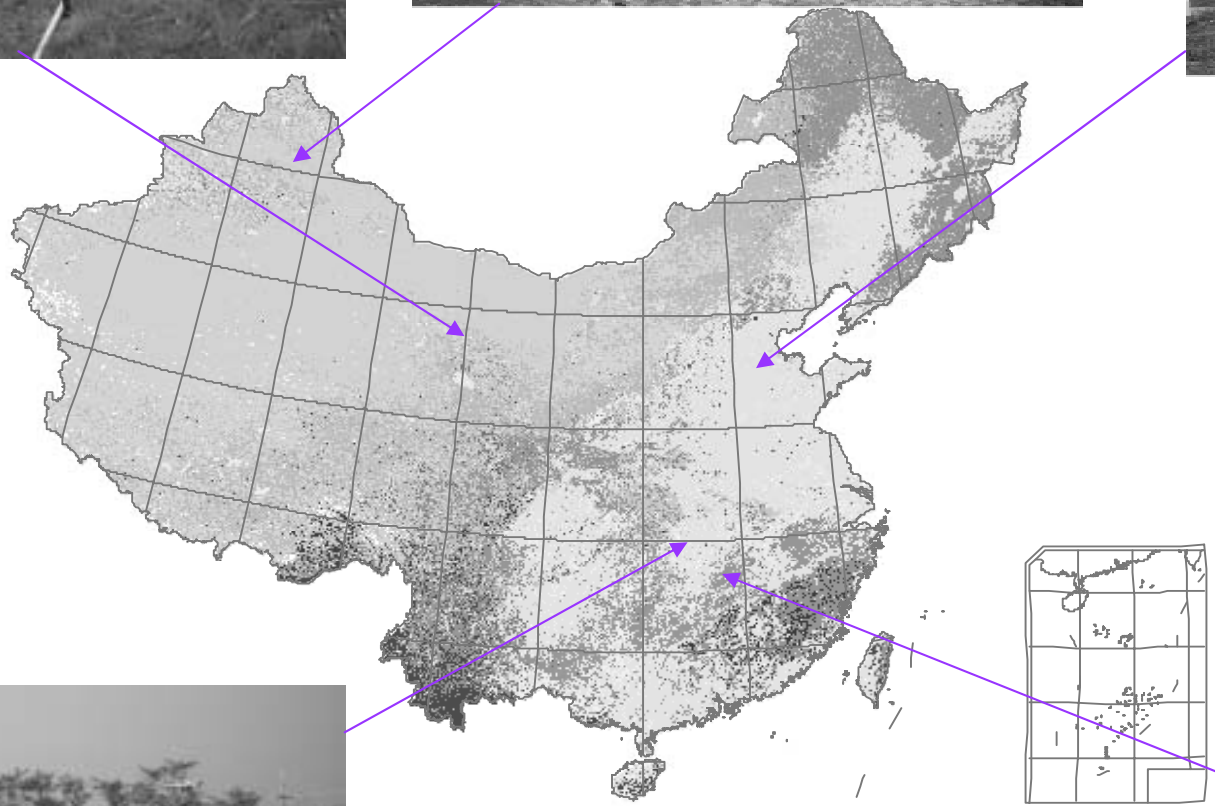
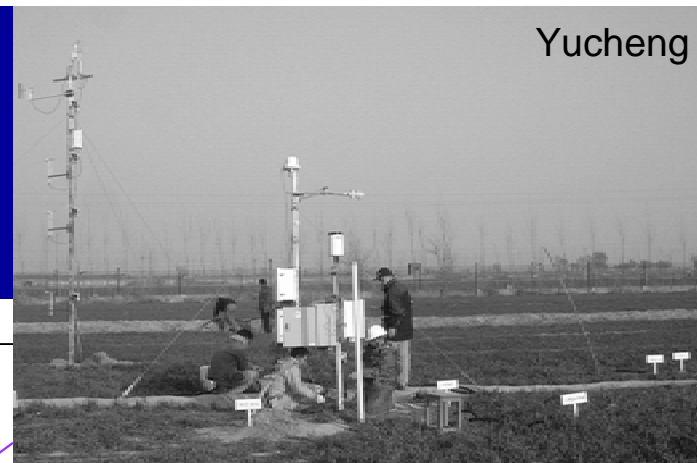
Haibei



Fukang

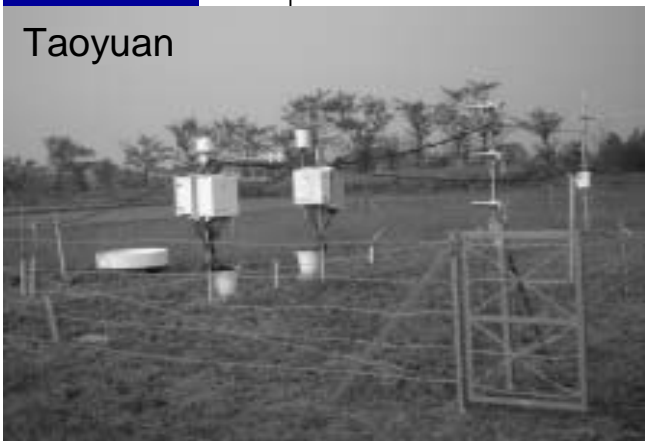


Yucheng



-  Evergreen Needle leaf Forest
-  Evergreen Broadleaf Forest
-  Deciduous Needle leaf Forest
-  Deciduous Broadleaf Forest
-  Mixed Forest
-  Shrublands
-  Grasslands
-  Croplands
-  Urban and Built-up
-  Snow and Ice
-  Barren or Sparsely Vegetated
-  Water Body
-  Other

Taoyuan



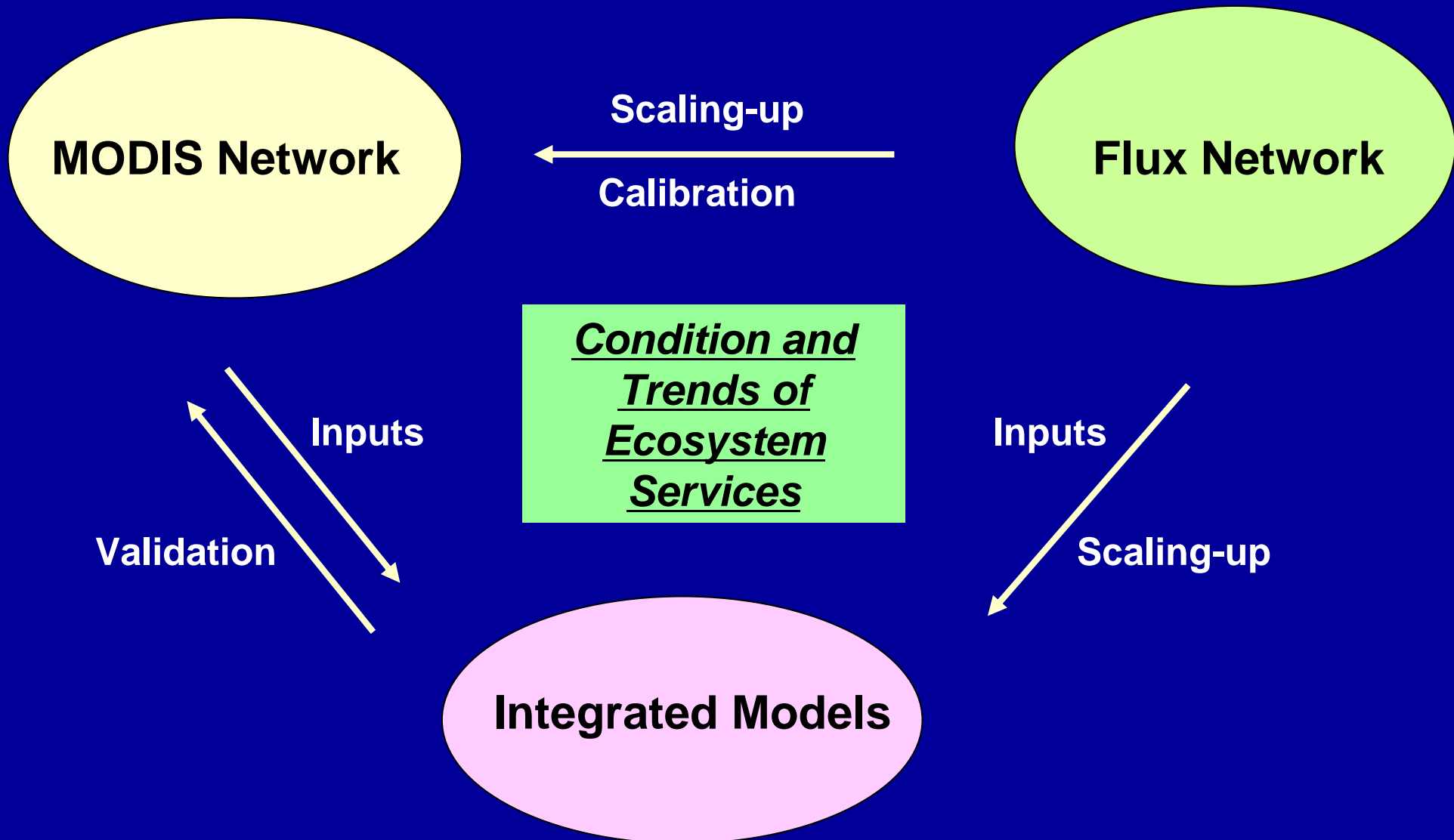
Qianyanzhou



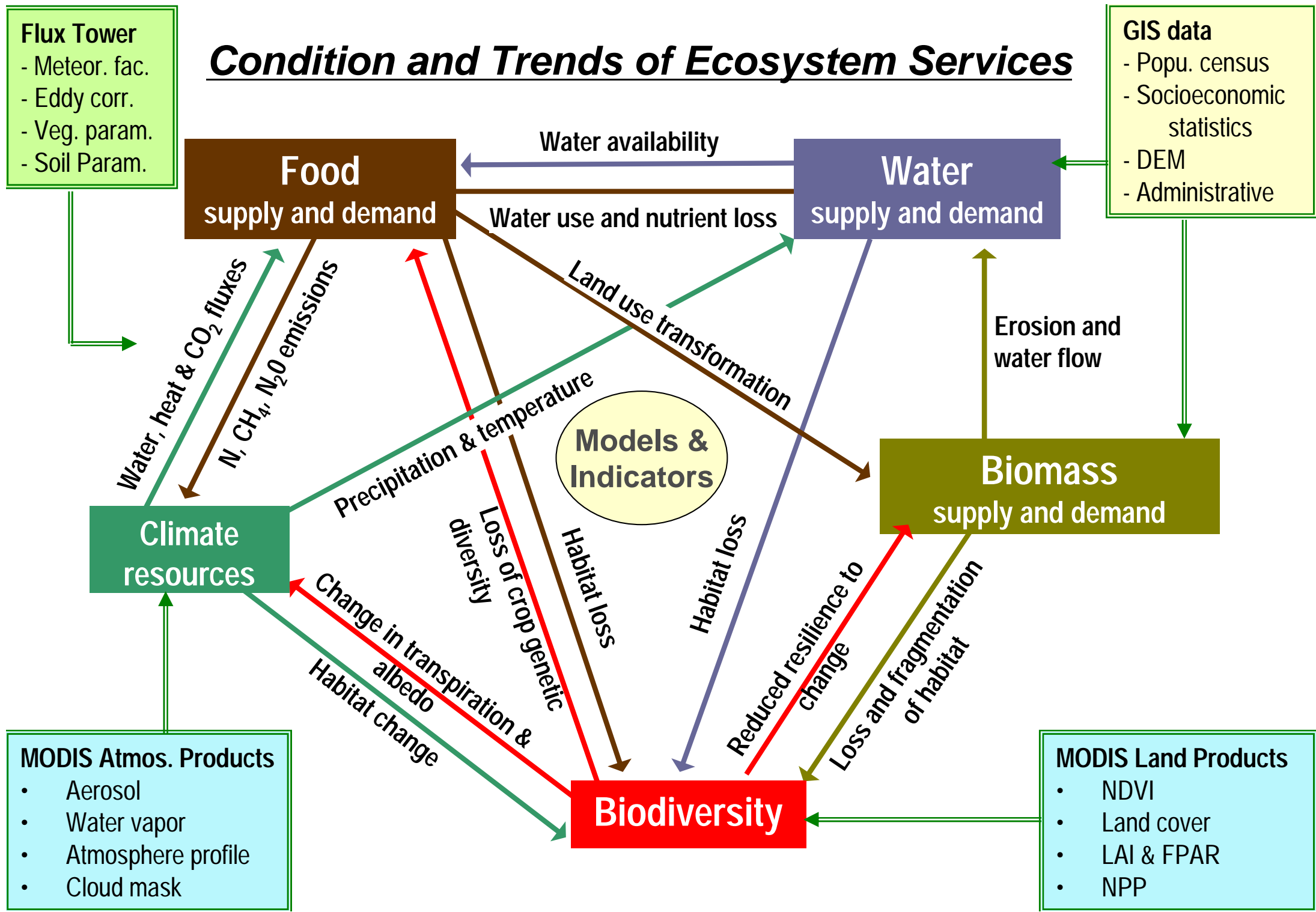
MODIS Land-cover Map of China in 2002

APIES-FLUX

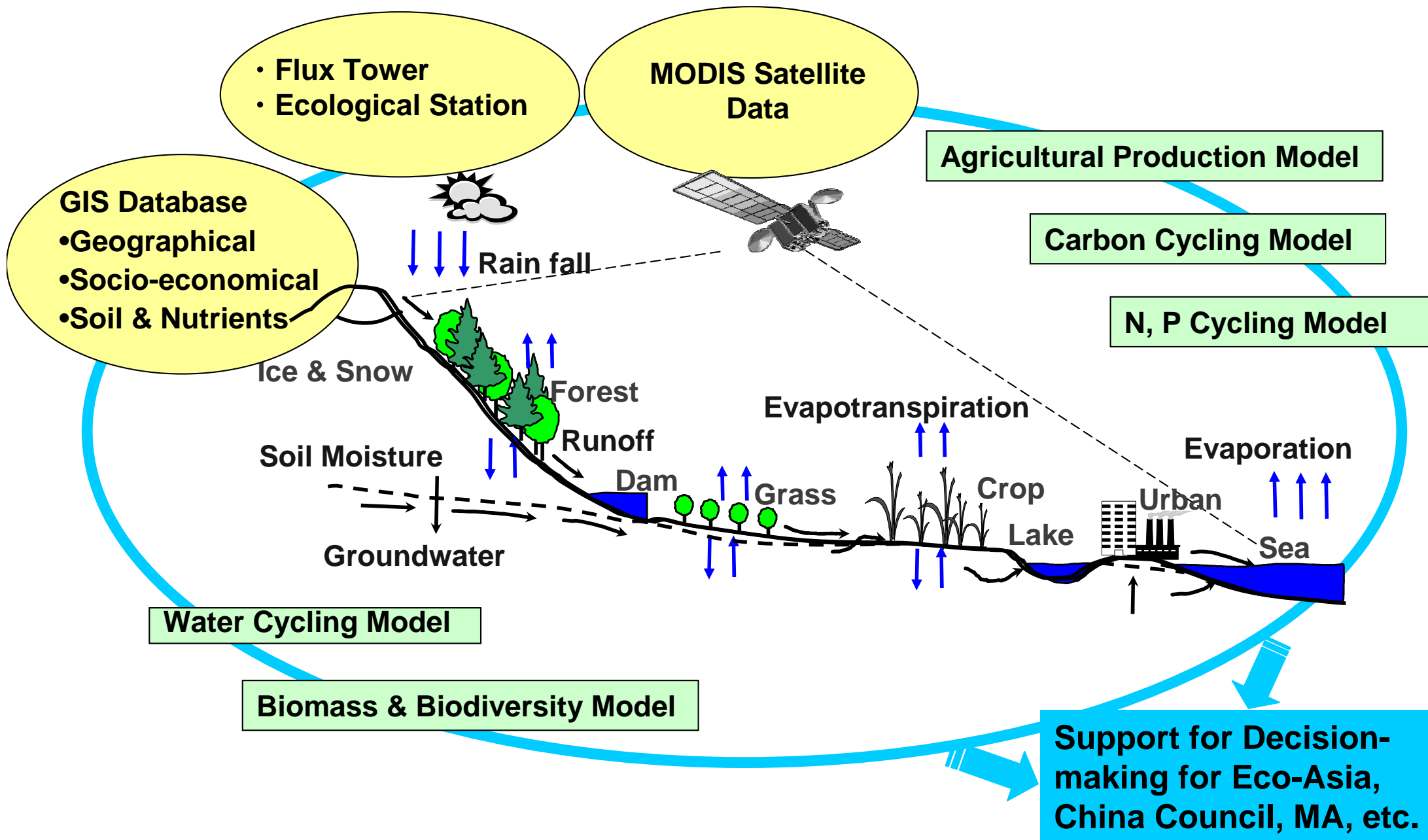
Framework of APEIS-IEM Network



Condition and Trends of Ecosystem Services



Catchment-based Integrated Model for Assessment of Ecosystem Services



V.N. Sukachev
Institute of Forest
Lab. Forest Fire
Remote Sensing & GIS

NASA Goddard Space
Flight Center



АСА-14 07.08.94

NOAA and MODIS(Terra/Aqua) Receiving Stations in Krasnoyarsk Forest Institute Sb.Br.RAS



AEROSPACE MONITORING OF WILDFIRES IN CENTRAL SIBERIA

Anatoly I. Sukhinin

V.N. Sukachev Institute of Forest, SB RAS, Krasnoyarsk,
660036,

Russian Federation

Tel/Fax: +7 3912 433686, +7 3912 494092

E-mail: "Institute" <institute@forest.akadem.ru>

"Sukhinin" <boss@ksc.krasn.ru>