

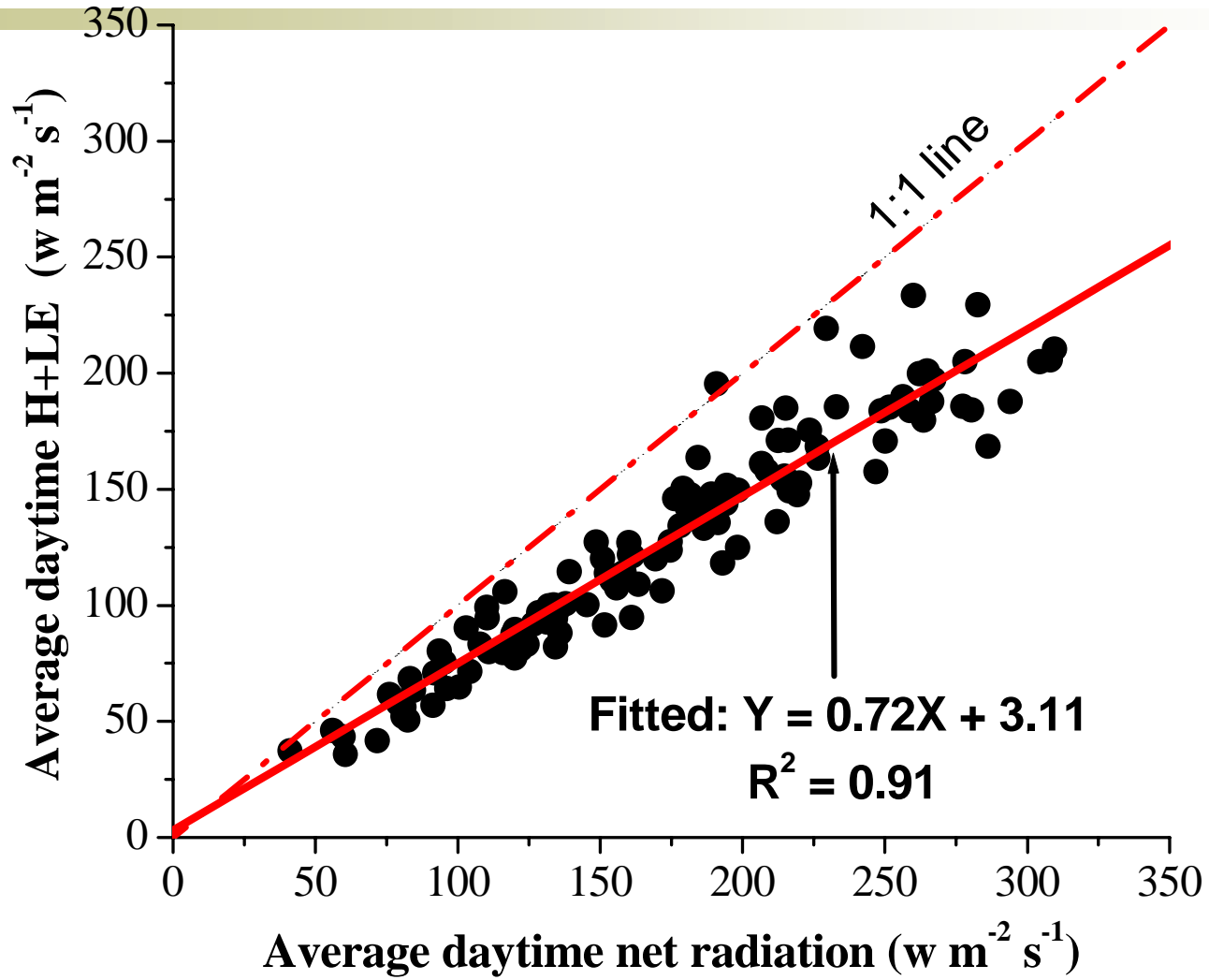
# Water, Heat and CO<sub>2</sub> fluxes over a Saline Desert ----Some Unusual Results

Li, Yan; Wang, Qinxue; Zhang, Xiao-Lei;  
Watannabe, Masataka

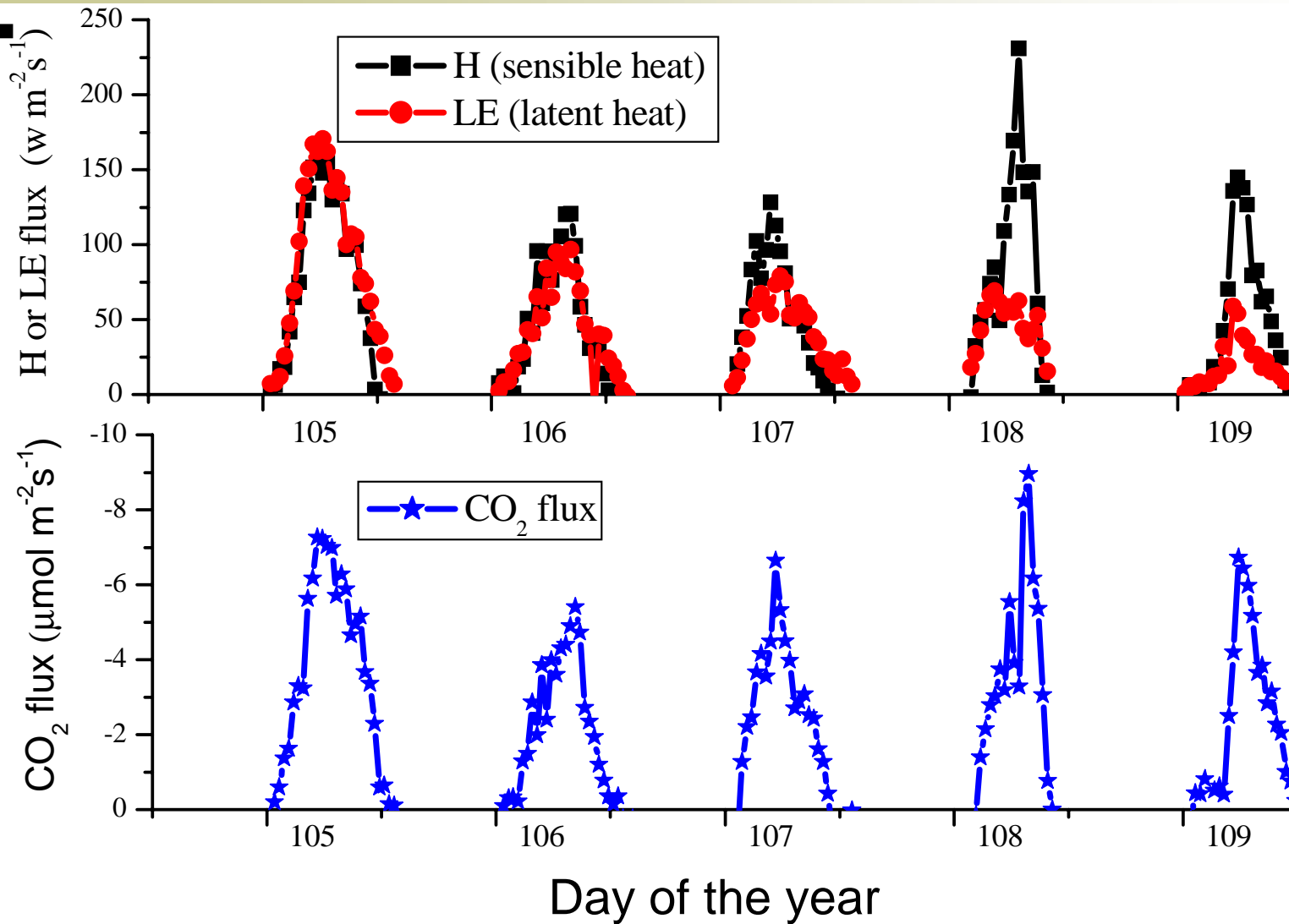
# The site

- Mean annual precipitation 150 mm
- Groundwater table 2.0—2.5 m
- Heavy saline soil
- On which only *Tamarix* shrub grows
- The shrub canopy covers about 14% of the ground
- The rest are mostly bare saline soil

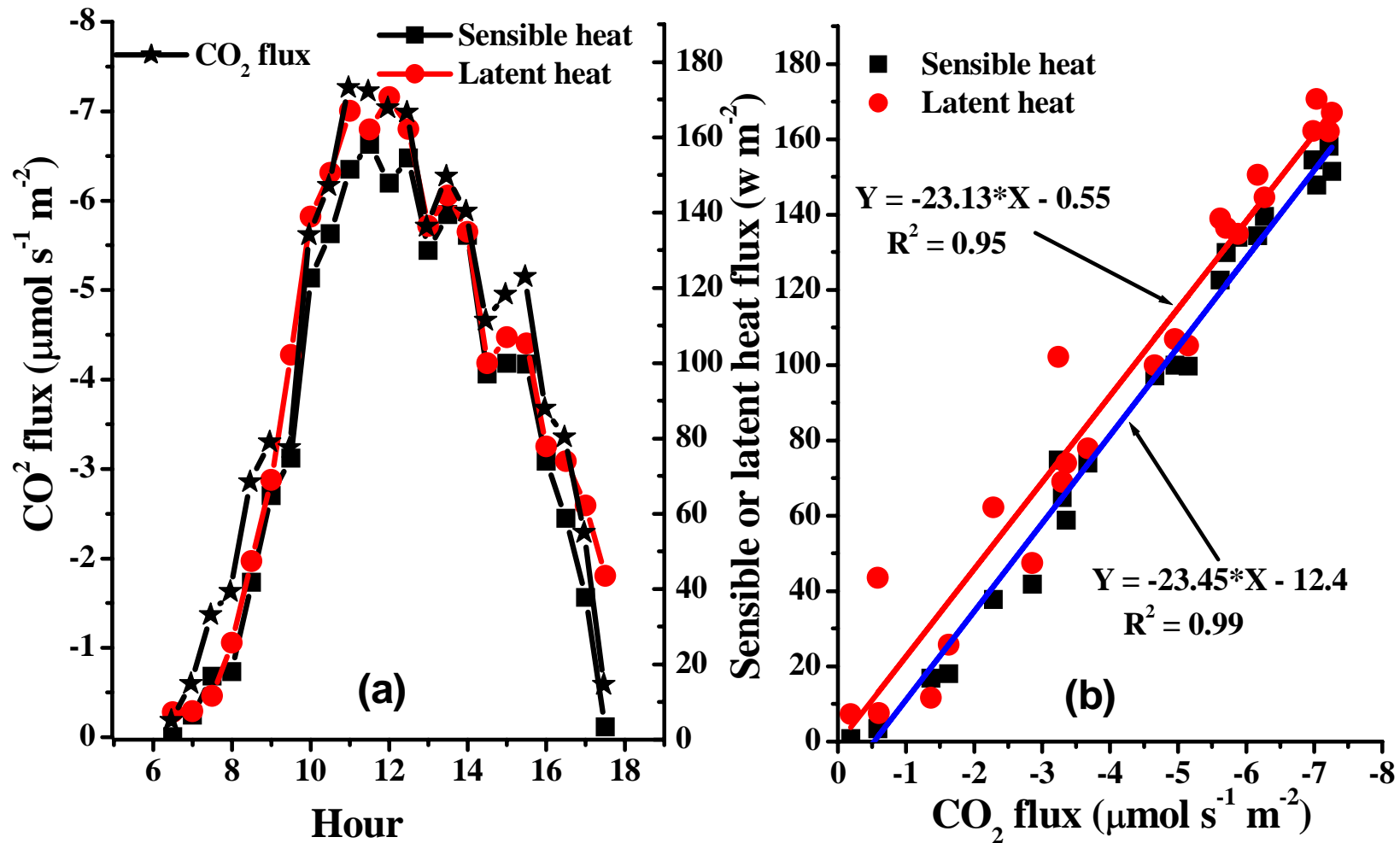
# The measurements



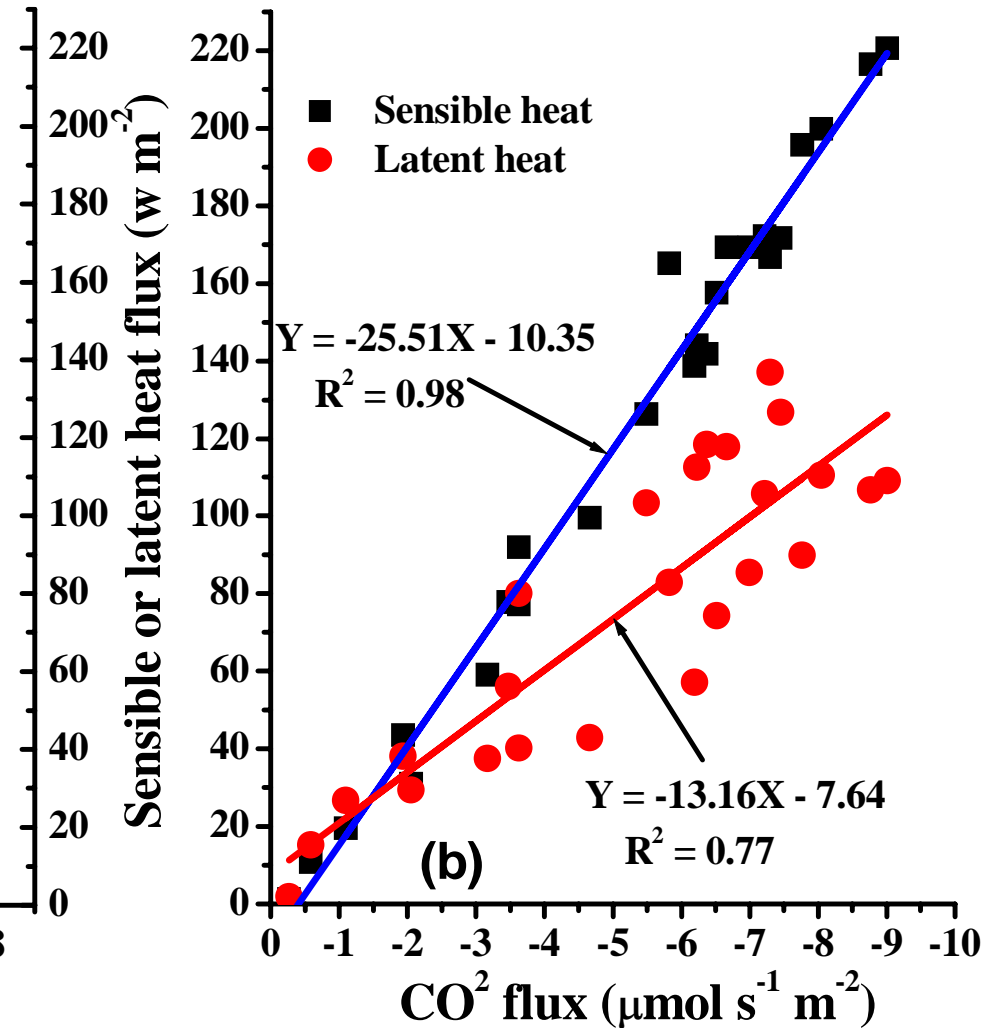
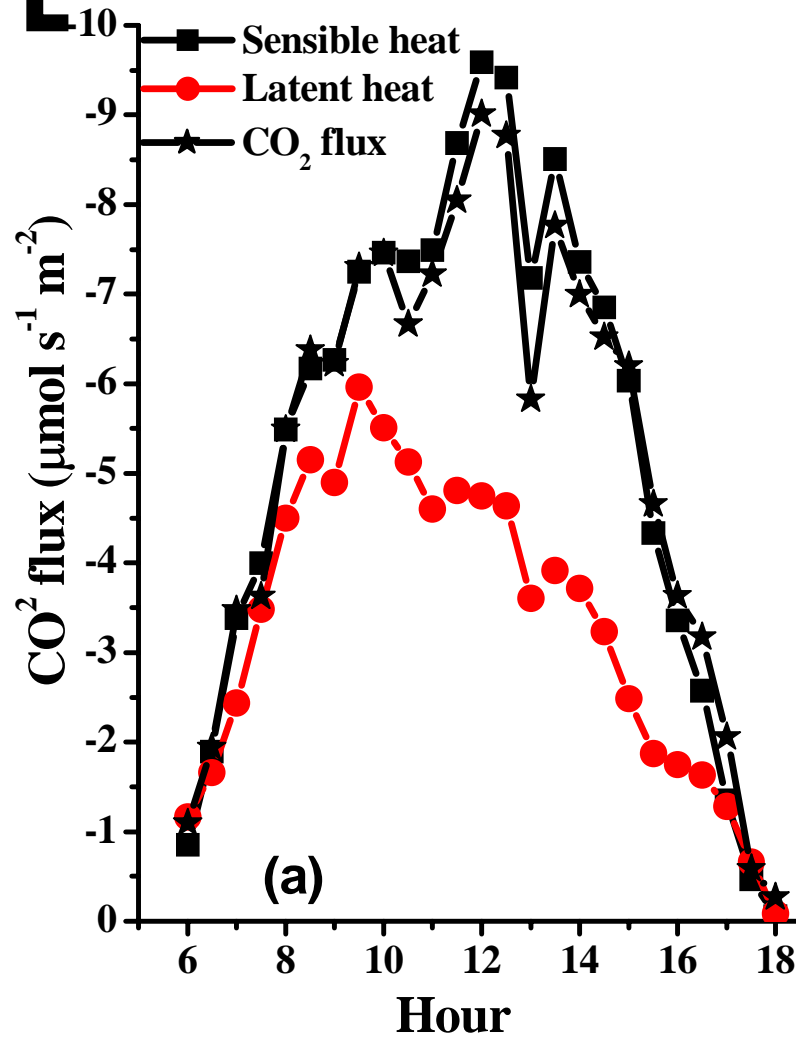
# Fluxes after a rainfall event



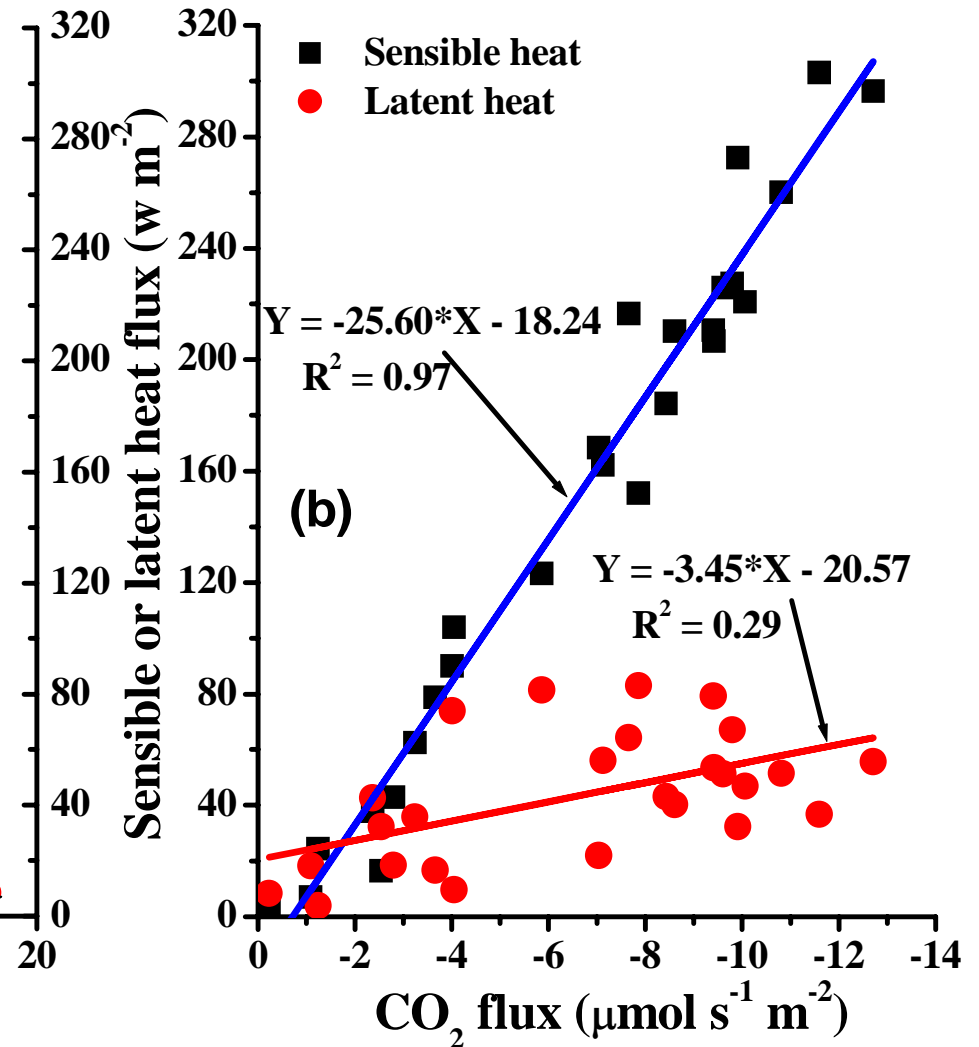
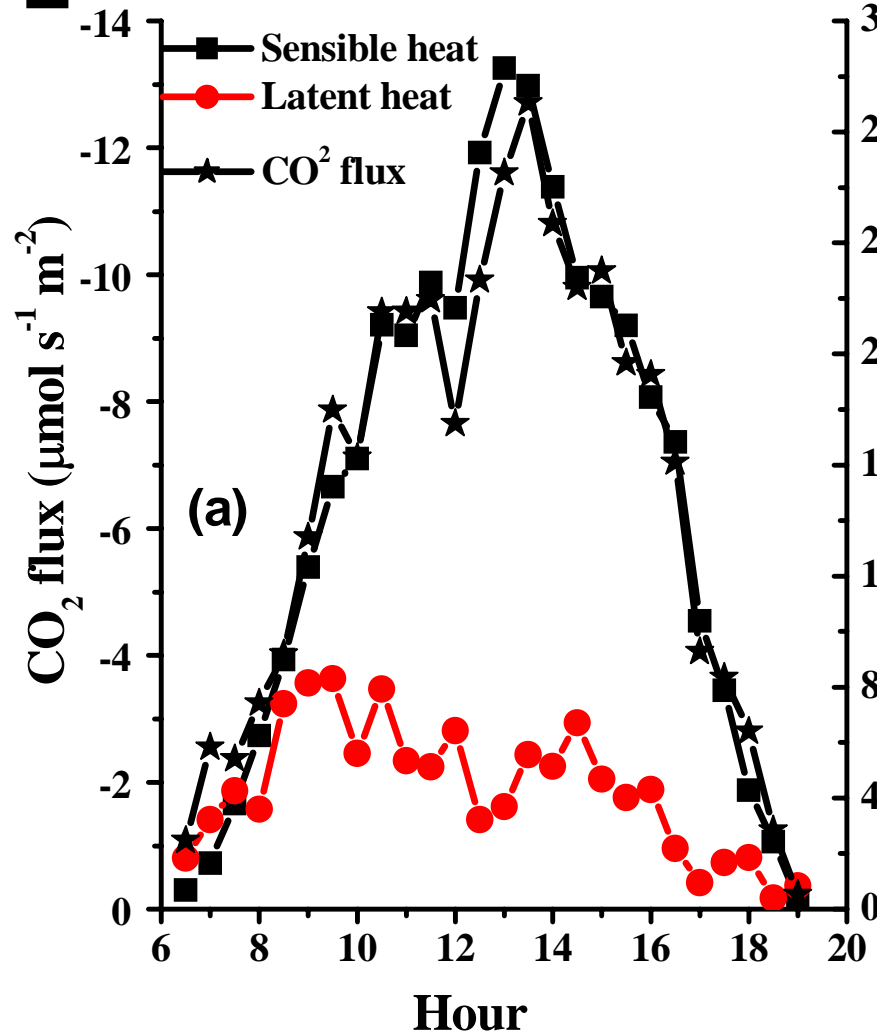
# The day with wet soil surface



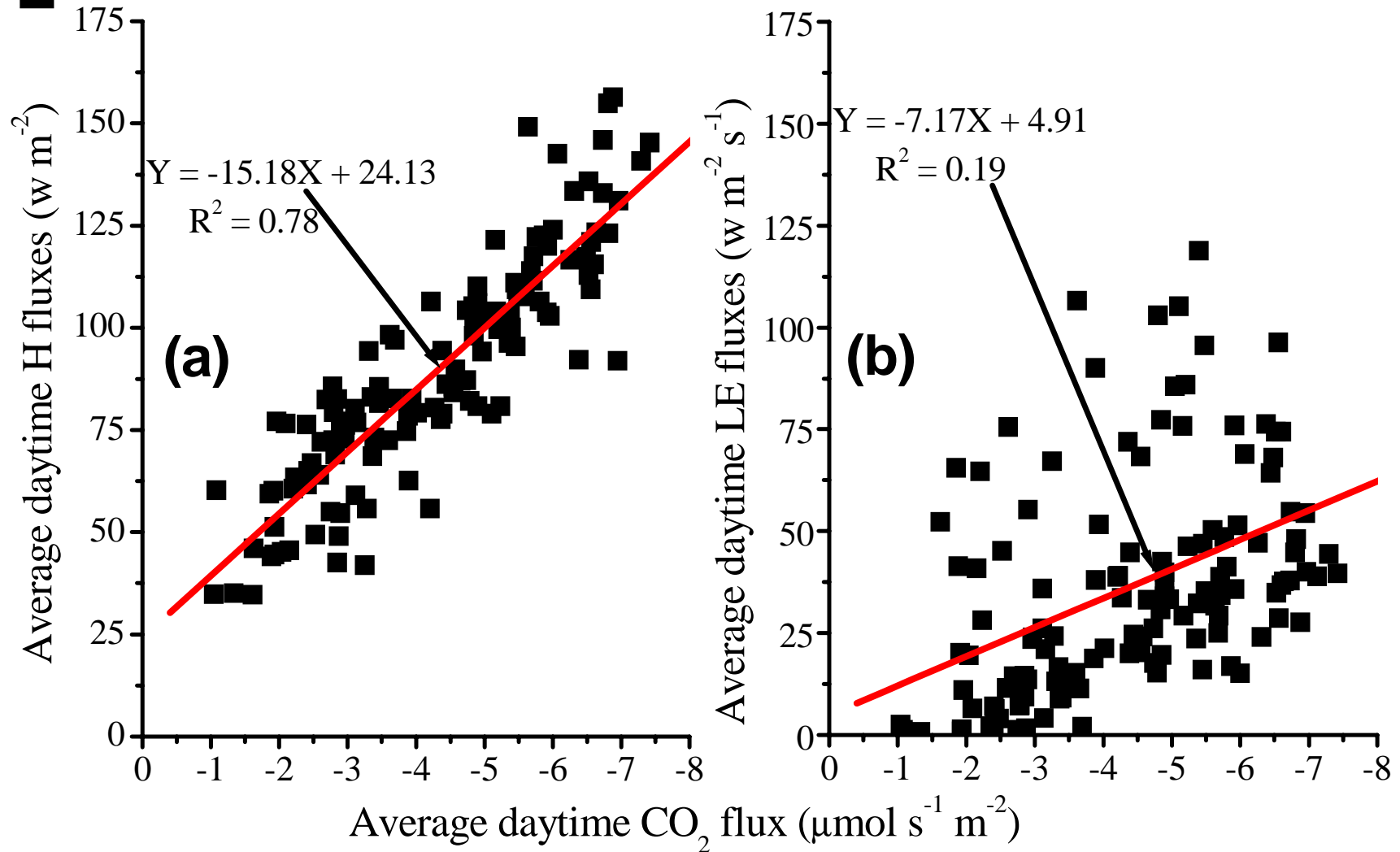
# The day of moderately wet



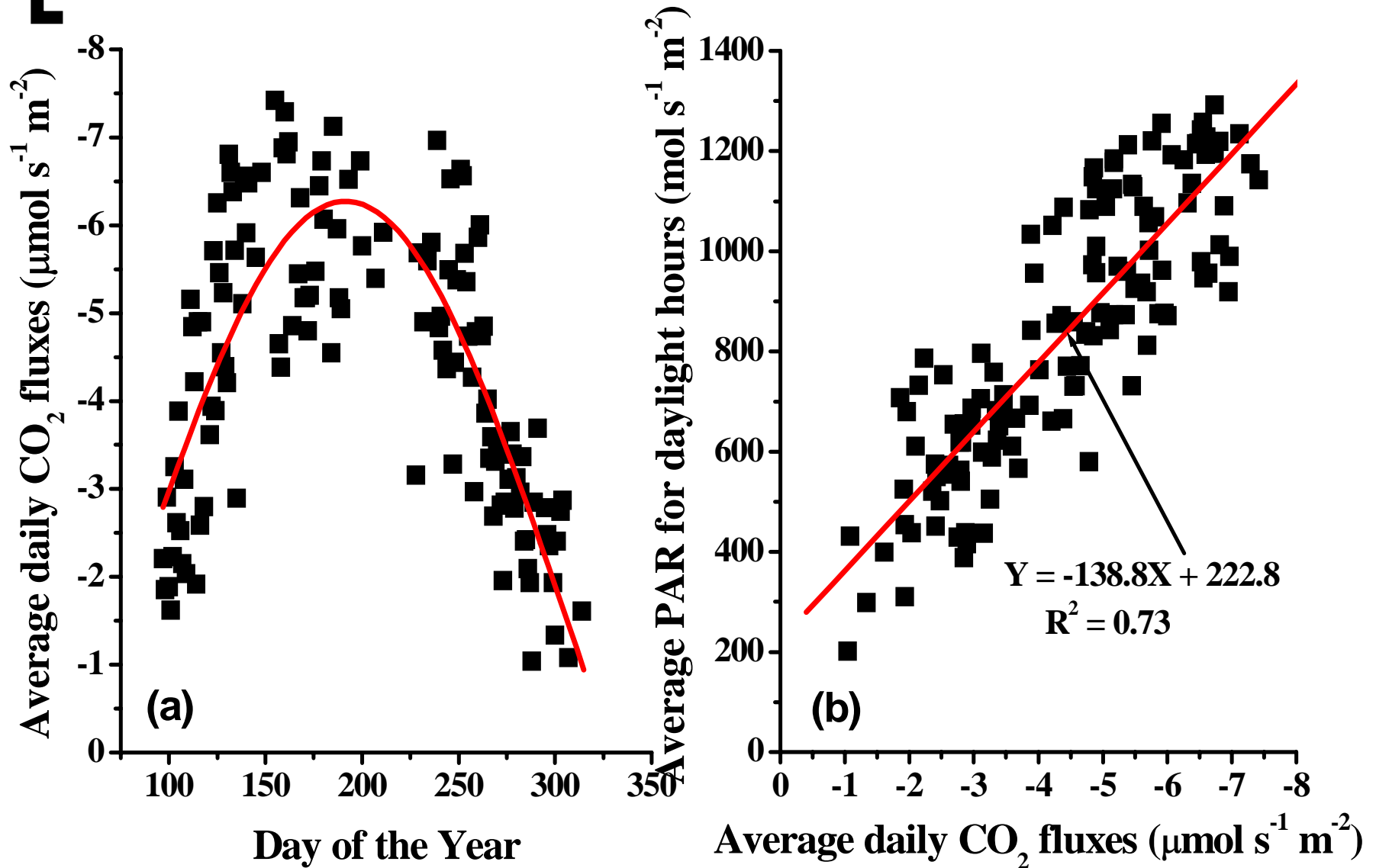
# The day of extremely dry



# Daily values for whole season



# The relation with PAR





# Explanations

