

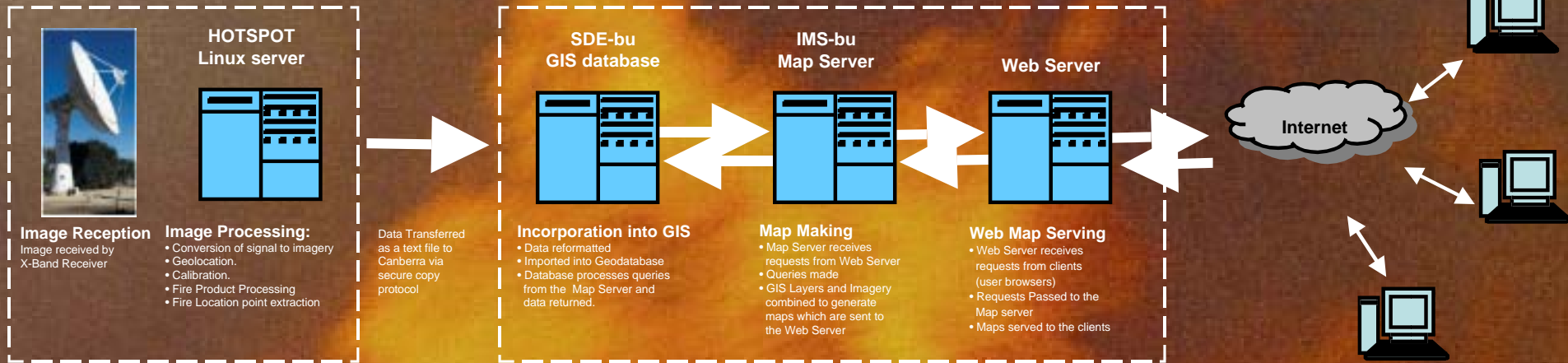
# Sentinel: Dynamic Fire Location Mapping

## INFRASTRUCTURE

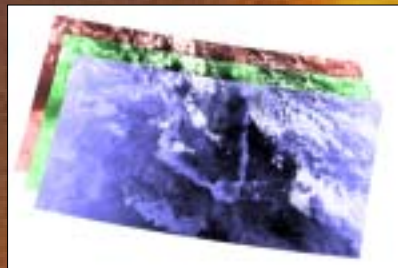
ACRES Data Acquisition Facility  
Alice Springs

Canberra

Internet Users with  
standard browsers

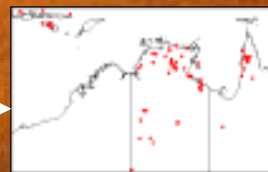


## PRODUCTS

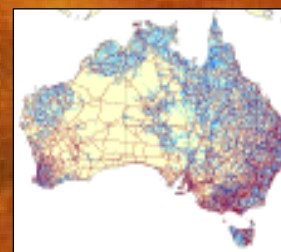


```
18.525;147.465;322.6;1.0;1.0
19.527;147.475;331.0;1.0;1.0
19.703;145.773;333.0;1.1;1.0
20.023;145.398;332.1;1.1;1.0
20.566;148.250;330.5;1.0;1.0
20.293;146.196;330.7;1.0;1.0
20.294;146.206;342.2;1.0;1.0
20.296;146.216;342.7;1.0;1.0
20.250;145.959;328.5;1.1;1.0
20.305;146.214;330.0;1.0;1.0
20.261;145.867;330.3;1.1;1.0
20.314;146.213;331.3;1.0;1.0
20.315;146.223;337.1;1.0;1.0
20.325;146.221;332.5;1.0;1.0
20.595;145.525;330.7;1.1;1.0
20.669;145.464;332.4;1.1;1.0
20.935;145.180;365.2;1.1;1.0
```

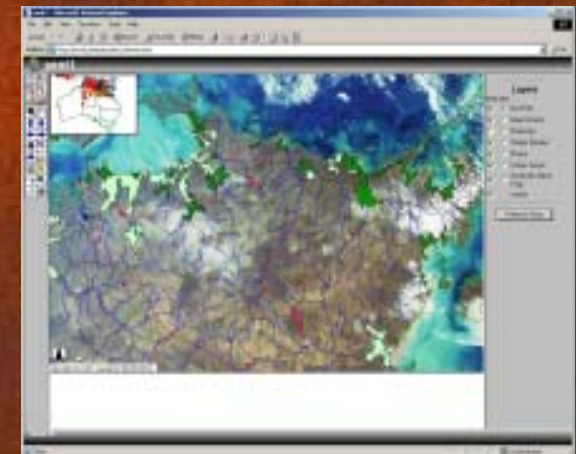
Hotspot data file



Hotspot data map layer



Geographic Data provides context.



Hotspot Locations are generated by combining information from several MODIS bands.

Web Maps are Dynamic.

- Fire Locations are displayed in relation to other Geographic data
- Maps are rendered and displayed on according to user interaction
- Contextual layers can be added or removed.
- Maps can be panned and zoomed.
- Maps Layers are scale sensitive providing more information at large scales without cluttering the display at small scales.

